

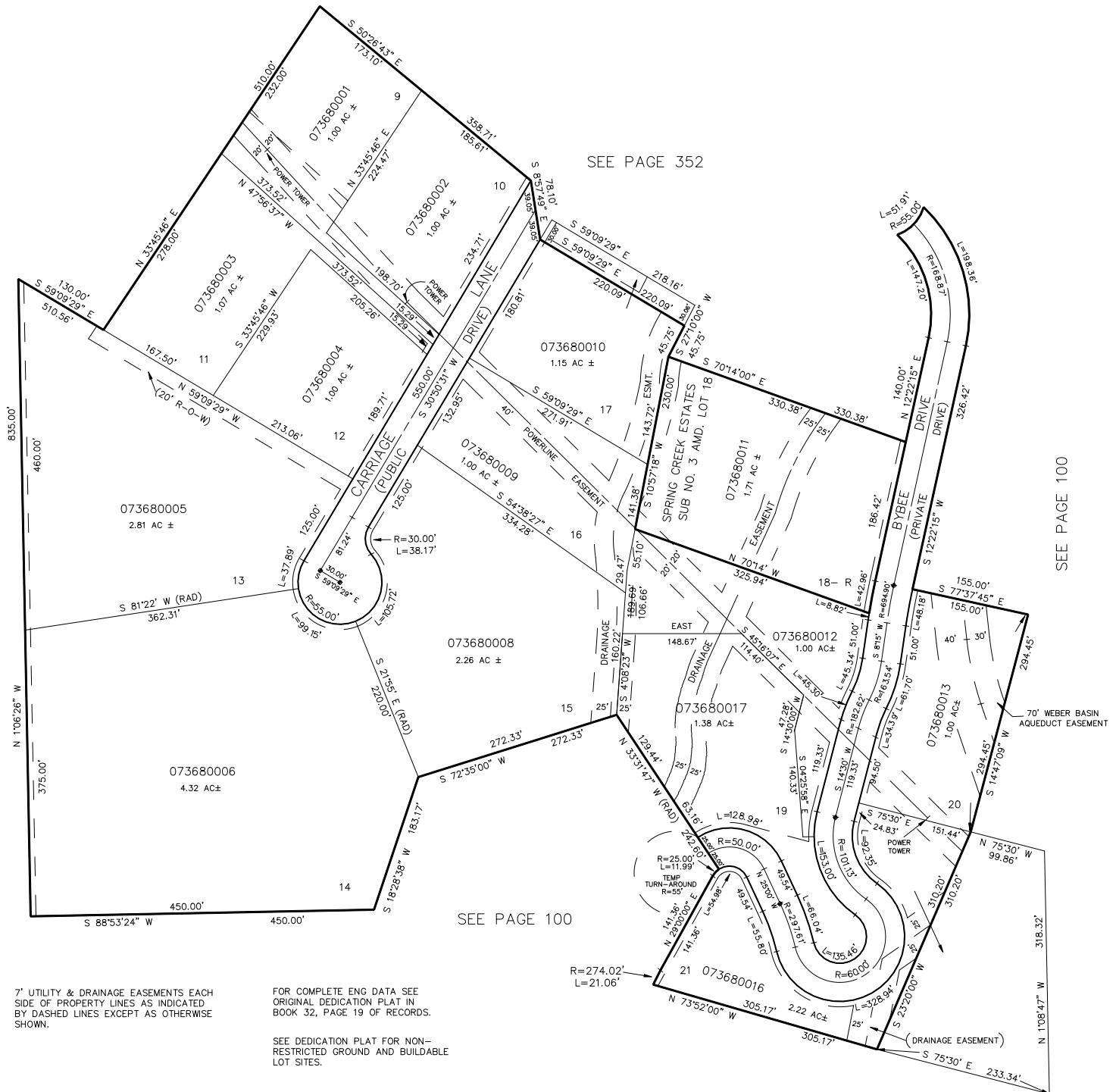
PART OF THE NW 1/4, SEC. 25, T.5N., R.1W., S.L.B. & M.  
**SPRING CREEK ESTATES SUBDIVISION NO. 3**  
**SPRING CREEK ESTATES SUBDIVISION NO. 3 AMD. LOT 18**

IN WEBER COUNTY  
 SCALE 1" = 100'

TAXING UNIT: 54

368

SEE PAGE 103



SEE PAGE 100